



Shaping practices
Influencing policies
Impacting lives

2021

Annual Report

IMPACT

An aerial photograph showing a wide, winding river that meanders through a vast, flat, green landscape. The river is a light brownish-grey color, contrasting with the vibrant green of the surrounding fields or marshes. The horizon is visible in the distance under a pale, overcast sky. The overall scene is serene and expansive.

| OUR AIM

IMPACT aims to shape practices and influence policies in humanitarian and development settings in order to positively impact the lives of people and their communities.



TABLE OF CONTENTS

| | |
|------------------------------|-------|
| OUR AIM | 2 |
| FOREWORD | 4 |
| OUR IMPACT | 5 |
| OUR PROGRAMMES | 6-9 |
| OUR ACTIVITIES | 10-11 |
| GLOBAL PRESENCE | 12-13 |
| COUNTRY OVERVIEW | |
| Middle East and North Africa | 14-18 |
| West and Central Africa | 19-23 |
| East Africa | 24-27 |
| Europe | 28-29 |
| Central and South Asia | 30-31 |
| Americas and Caribbean | 32-34 |
| DONORS AND PARTNERS | 36-37 |
| HUMAN RESOURCES | 38 |
| FINANCE | 39 |
| GOVERNANCE AND POLICIES | 40-41 |
| UNDER THE SPOTLIGHT | 42 |

FOREWORD

IMPACT was created in 2010 to support aid actors in making better, more informed decisions, and in turn enhance the impact of their actions on the lives of crisis-affected communities. We believed that one of the main pathways to improving aid was through a direct engagement of these communities in aid planning and delivery. Since then, over the years, we have developed a number of practical solutions for aid actors to strengthen this engagement. Through REACH, we promote the use of evidence gathered from crisis-affected people to inform decision-making. Through AGORA, we promote direct linkages between aid actors and local communities in the design and implementation of aid at settlement level. Through PANDA, we work directly with aid actors to support them in improving their programmatic tools.

As we enter our second decade of existence, we can be proud of what we have achieved so far. As you will see in this Annual Report, IMPACT has established itself as a key provider of information and analysis in contexts of crisis. Over the course of 2021, IMPACT teams have supported evidence-based planning and community engagement in 29 countries, publishing over 2,000 information products and engaging with over 1,000 actors on the ground. Across these countries, our work has been utilised in a number of ways – from supporting yearly resource planning and prioritisation by donors and consolidated appeals, to monitoring changing humanitarian situations, market dynamics, and other factors necessary for enabling emergency response. We have also promoted direct participation by crisis-affected communities in aid delivery and recovery planning, and have supported aid actors to improve the quality of their programming from global to project-specific level.

In a context in which international aid is increasingly in need but also under scrutiny, IMPACT's mission and unique value-add is ever-more important. In the years ahead, we will continue to fulfil our objectives of enabling the delivery of assistance according to how and when crisis-affected people need it, whilst also developing new solutions that promote fairer outcomes for people affected by emerging and ongoing global challenges. In line with our strategic plan, we will also strengthen our organisational vehicle: consolidating existing initiatives and continuing to incubate new ones, notably on migrations and climate change; continuing to improve our research methods, to become a reference of global research; redoubling on internal learning and striving for continued improvement in our work; strengthening our external engagement at global and country level; and investing in our systems and processes, to become a reference for transparency in the sector.

Finally, I would like to thank the teams working for IMPACT and its initiatives, as well as our many partners. I look forward to continuing our common journey with you in the coming years.



Luca Pupulin
Executive Director

The REACH team have provided much formidable support to the JIAF project throughout 2021. At the strategic level REACH have often played a leadership role, helping guide discussions at the Steering Committee – on many occasions setting the agenda and setting the foundations for a common constructive narrative amongst JIAF stakeholders, whose views are often quite diverse.

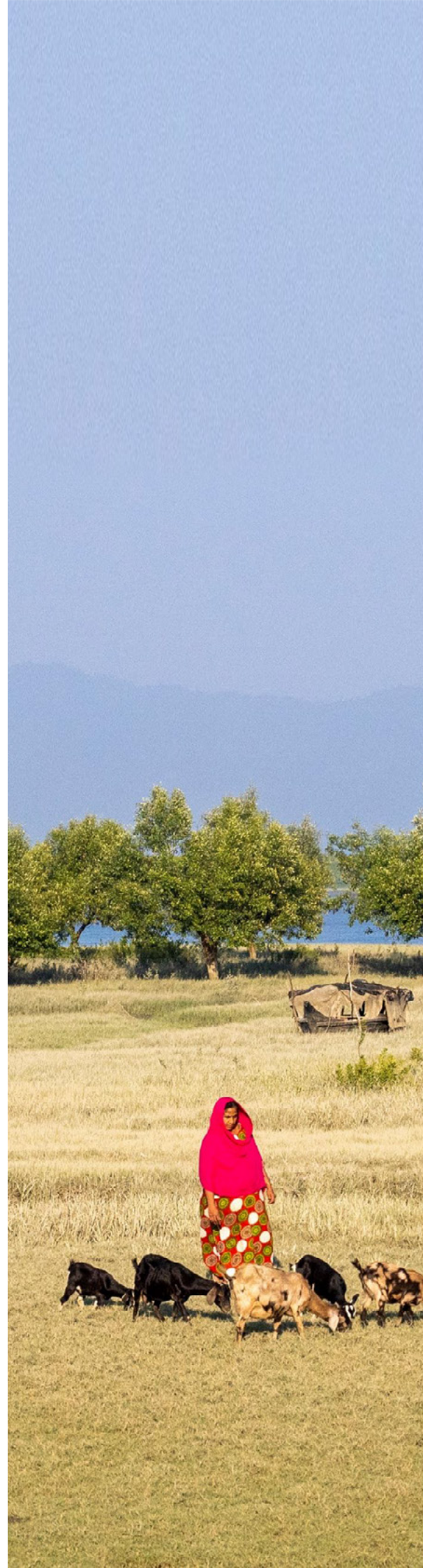
At technical level, support has been second-to-none: REACH co-led the Methodology Working Group, as well as the tripartite management team which supported the JIAF independent review in 2021.

Esther Waters-Crane, Senior Project Manager for Joint Inter-Sectoral Analysis Framework, Project Management Unit

In 2021, the WASH Severity Classification was the South Sudan WASH Cluster’s key strategic tool. It was used to shape the response in South Sudan, drive prioritization following the comprehensive analysis, and highlight the key WASH needs throughout the country.

The Cluster used the WSC as our key document for donor advocacy, and it was also used more broadly to prioritize the inter-sectoral humanitarian response in South Sudan.

South Sudan WASH Cluster



OUR PROGRAMMES

REACH INITIATIVE

REACH enables crisis-affected populations to receive the assistance they need, when they need it, how they need it.

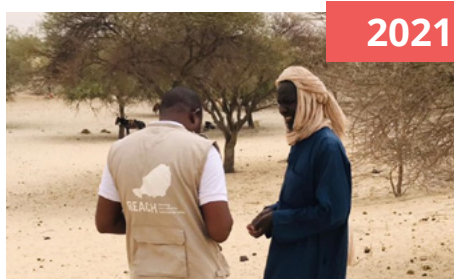
CRISIS-LEVEL RESPONSE PLANNING

Enabling evidence-based **inter-sectoral** coordination and planning, according to needs.



- In addition to informing People in Need and severity of needs estimations, findings across the **17 Multi-Sector Needs Assessments (MSNAs)** facilitated by REACH in 2021 were cited more than 1,400 times in key strategic planning documents, primarily Humanitarian Needs Overviews and Humanitarian Response Plans.
- Key contributor to the technical and strategic development of the **Joint Inter-Sectoral Analysis Framework (JIAF)**, through participating in the global Steering Committee and co-chairing the Methodology Working Group.

Enabling needs-based **sector-specific** coordination and planning, according to needs.



- Implementation of **35 assessments** related to Food Security, Nutrition, CCCM, WASH, Shelter, Education, and Telecommunications and technical support to **47 country-level clusters**.
- Establishment of first-ever global baseline of the severity of WASH needs, leading the implementation of the WASH Severity Classification analysis in **20 countries**.
- Support to Integrated Phase Classification (IPC) for Acute Food Insecurity or Acute Malnutrition in **11 countries**, either through provision of data or participation in analysis workshops.

EMERGENCY PRIORITISATION

Triggering and informing rapid response in the event of a sudden escalation of needs.



HSM ZOOM IN

A series of attacks in Dikwa town between 19 February and early March by non-state armed groups triggered the evacuation of humanitarian actors from an area heavily dependent on life-saving assistance for food, water, and healthcare. Leveraging its HSM workstream, the REACH team in northeast Nigeria conducted a rapid assessment in Dikwa, Ajiri, and Maiduguri to better understand the current and anticipated needs. Through this assessment, REACH was able to identify reports of severely limited water access and potential deaths related to thirst, and quickly alerted donors and aid actors to mobilize a response.

PEOPLE-CENTRED ASSISTANCE

Ensuring the voices of crisis-affected populations are central to how aid is delivered.



2021 ACHIEVEMENTS

- Produced a first-ever global analysis of Accountability to Affected Populations (AAP) data, which was collected through 2020 MSNAs in 12 countries. The analysis highlights pre-existing vulnerabilities, satisfaction with aid, and preferred information and feedback channels.
- Assessment of **4,491 markets globally**, through JMMI and another 30 rapid and thematic market assessments.
- Partnered with GSMA and the Emergency Telecommunications Cluster to publish the Connectivity, Needs, and Usage Assessment (CoNUA) Toolkit. The toolkit aims to guide users in collecting data about mobile phone access, usage, preferences, and digital skills.

PILOTING NEW METHODS

Cross-cutting exploration of new work streams and innovative practices to inform more effective humanitarian response.

2021 ACHIEVEMENTS

- Foundational work to develop a framework for integrating remote sensing with inter-sectoral analysis workstreams, namely MSNAs and HSM – setting the stage for pilot activities in 2022.
- Remote sensing tools and approaches were developed for key thematic areas – water supply, vegetation health, and cropland abandonment – to support bespoke Cluster and partner needs.

OUR PROGRAMMES

OTHER INITIATIVES

IMPACT is developing a diverse portfolio of solutions and approaches to enable fairer outcomes for populations affected by emerging and ongoing global challenges.

AGORA

AGORA supports the stabilisation of crisis-affected areas by strengthening local response capacities and recovery efforts.



AGORA ZOOM IN

In response to severe conflict and internal displacement issues, IMPACT supported local and international humanitarian actors in Central African Republic (CAR) and Niger to develop joint local recovery response plans in more than 20 municipalities. IMPACT facilitated a series of trainings for officials and civil servants from municipal governments in both countries, culminating in a peer-to-peer learning workshop that brought together 15 local governance actors from southeast CAR and the Diffa region in Niger.

HUMAN MOBILITY AND MIGRATION

IMPACT delivers innovative research programs that improve practices and policies on the movement of people globally.



2021 ACHIEVEMENTS

- In 2021, IMPACT focused on pivoting innovative research methodologies to access hard-to-reach migrant populations through the use of Big Data and partnerships with academia and the private sector.
- Migration expertise has been increasingly streamlined into REACH and PANDA programming through the development of migrant-specific MSNAs, Third-Party Monitoring exercises, and multi-agency needs assessments in North and West Africa and Latin America.

OUR ACTIVITIES



321

RESEARCH CYCLES
IMPLEMENTED



1,909

FOCUS GROUP
DISCUSSIONS



268,898

HOUSEHOLD INTERVIEWS



291,262

KEY INFORMANT INTERVIEWS



REACH

Informing
more effective
humanitarian action

+243 RESEARCH CYCLES **28** COUNTRIES
+1,932 INFORMATION PRODUCTS

PANDA **20** COUNTRIES
+52 INFORMATION PRODUCTS **+64** RESEARCH CYCLES

AGORA **7** COUNTRIES
+110 INFORMATION PRODUCTS **+14** RESEARCH CYCLES

2,010 INFORMATION PRODUCTS PUBLISHED ACROSS 321
DIFFERENT RESEARCH CYCLES:



+894 factsheets
shared



+498 datasets
published



+386 standalone
maps created



+117 situation
overviews published



+96 presentations
produced



+75 reports
launched



+31 bulletins created

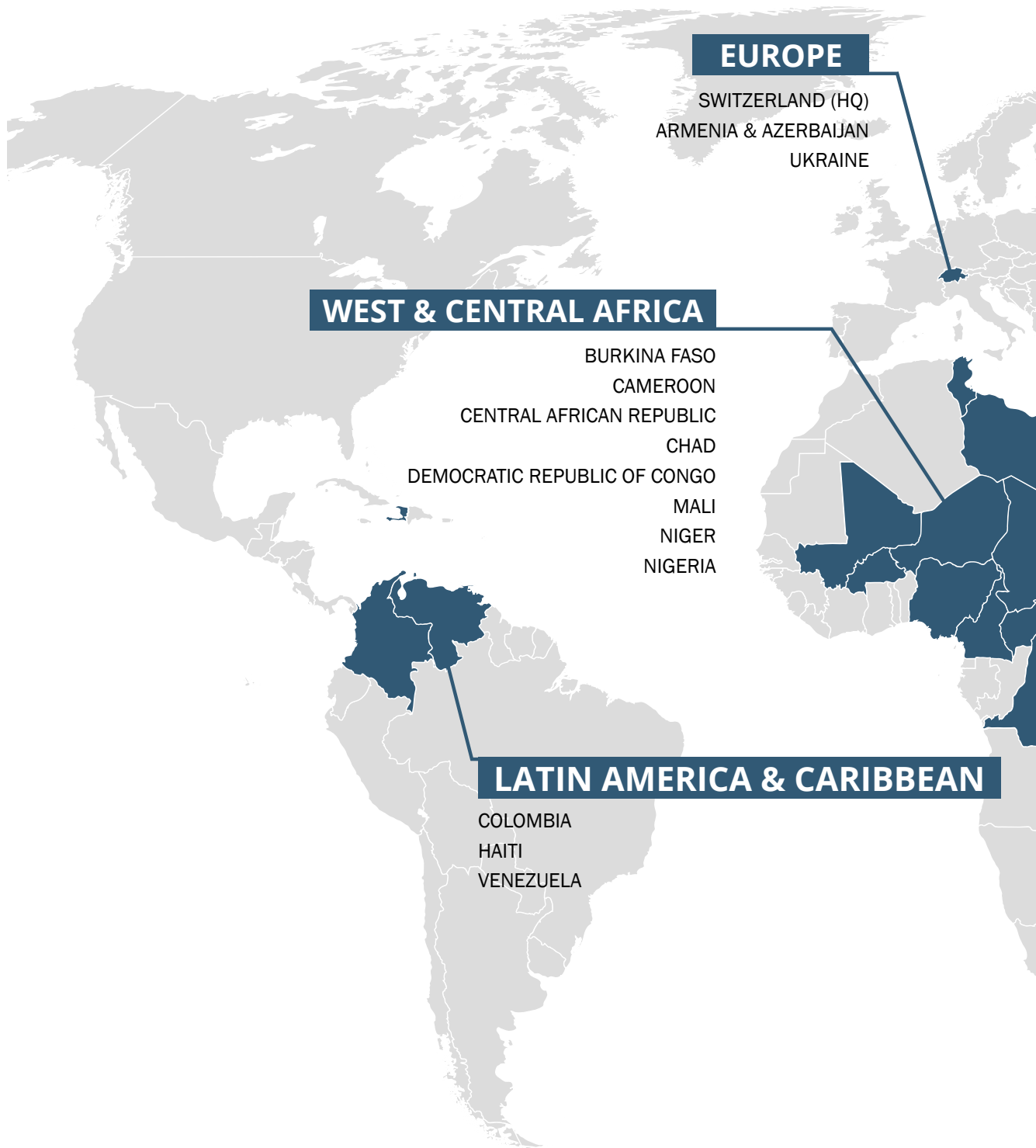


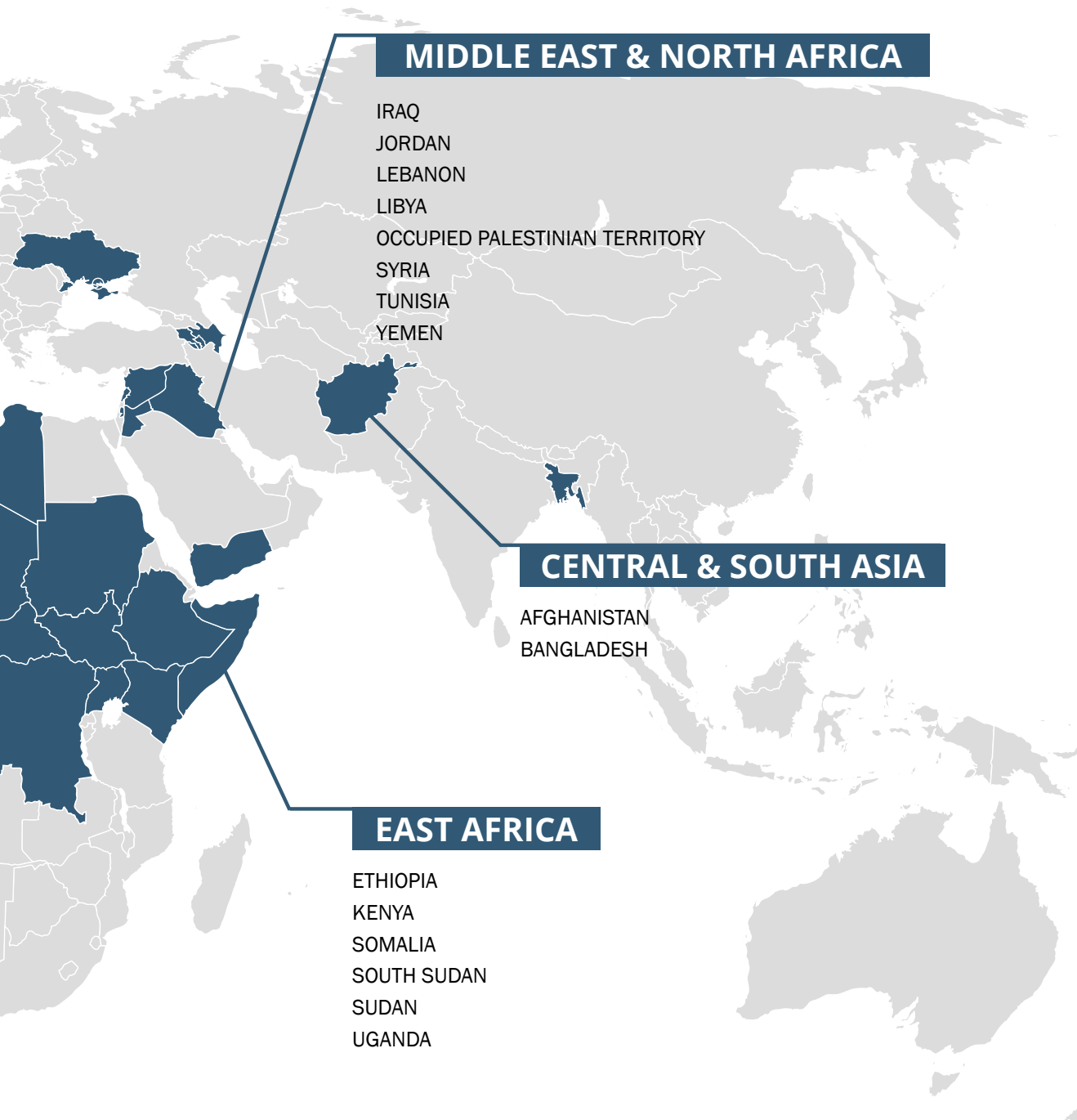
+6 profiles edited



+5 executive
summaries shared

OUR FOOTPRINT





MIDDLE EAST & NORTH AFRICA

- IRAQ
- JORDAN
- LEBANON
- LIBYA
- OCCUPIED PALESTINIAN TERRITORY
- SYRIA
- TUNISIA
- YEMEN

CENTRAL & SOUTH ASIA

- AFGHANISTAN
- BANGLADESH

EAST AFRICA

- ETHIOPIA
- KENYA
- SOMALIA
- SOUTH SUDAN
- SUDAN
- UGANDA



MIDDLE EAST & NORTH AFRICA

+107 RESEARCH CYCLES **7** COUNTRIES **+52** PROJECTS
+195,136 DATA COLLECTION ACTIVITIES **+735** INFORMATION PRODUCTS

INITIATIVES PANDA REACH IRAQ

OUR IMPACT: SYSTEM-WIDE CHANGE

Using comparative analysis of in-camp and out-of-camp population groups assessed through the Multi-Sector Needs Assessment, the REACH team was able to highlight persisting needs of in-camp populations and the potential impact of funding gaps on service provision. Findings were shared with key camp management actors to support advocacy with international donors, the Humanitarian Country Team, and the Inter-Cluster Coordination Group.



OUR WORK

27

RESEARCH PROJECTS IMPLEMENTED DURING 2021

OUR PRODUCTS

128

INFORMATION PRODUCTS PUBLISHED

31,790

HOUSEHOLD INTERVIEWS

41

FOCUS GROUP DISCUSSIONS

687

KEY INFORMANT INTERVIEWS

OUR STAFF

34

STAFF WORKING IN OUR PROGRAMS

COUNTRY PERSPECTIVE

I went through the [Returns and Durable Solutions Assessment presentation] carefully and found it very informative. The information provided in the document reflects the situation in Al-Forat Markaz 100% including the gaps and challenges the communities face due to different obstacles.

National Liaison Officer, Returns Working Group / Durable Solutions Technical Working Group

SUPPORTED BY:



JORDAN INITIATIVES REACH PANDA

OUR IMPACT: EVIDENCE-BASED PROGRAMMING

In 2021, IMPACT Jordan completed the second year of its third-party monitoring of UNHCR and WFP cash assistance programmes for refugees. As the two agencies adapted their programming in response to the COVID-19 pandemic, IMPACT responded to the needs of the donor and partners by designing and conducting neighbourhood-level assessments on social cohesion and the associated role of cash assistance. Within a short timeframe, IMPACT reviewed global best practices and provided indicative findings on social cohesion in selected refugee-hosting communities across Jordan, highlighting to partners how social cohesion indicators can be considered in future cash programming and monitoring.

OUR WORK

9

RESEARCH PROJECTS IMPLEMENTED DURING 2021

OUR PRODUCTS

2

INFORMATION PRODUCTS PUBLISHED

3,809

HOUSEHOLD INTERVIEWS

12

FOCUS GROUP DISCUSSIONS

84

KEY INFORMANT INTERVIEWS

OUR STAFF

7

STAFF WORKING IN OUR PROGRAMS

COUNTRY PERSPECTIVE

The assessment findings were critical to UNICEF Jordan as they did not only highlight the socio-economic situation of the families living in [informal tented settlements (ITS)] but it also helped UNICEF (and its donors) to tangibly understand the impact of UNICEF services and the criticality of continuing the services for the ITS communities.

UNICEF Jordan

SUPPORTED BY:





LEBANON

INITIATIVES REACH PANDA

OUR IMPACT: SYSTEM-WIDE CHANGE

The REACH team facilitated the first pilot Multi-Sector Needs Assessment (MSNA) in Lebanon, which contributed to informing the Emergency Operation Cell joint analysis document and the Emergency Response Plan. Notably, the MSNA data supported the calculation of the PiN for the Lebanese, Migrant, and Palestine Refugees in Lebanon population groups for the first time.

OUR WORK

1

RESEARCH PROJECTS
IMPLEMENTED
DURING 2021

OUR PRODUCTS

9

INFORMATION PRODUCTS PUBLISHED

5,316

HOUSEHOLD INTERVIEWS

OUR STAFF

1

STAFF WORKING IN
OUR PROGRAMS

COUNTRY PERSPECTIVE

The first MSNA in Lebanon, conducted in 2021, was fundamental in providing an evidence base for the update of the funding and planning for vulnerable Lebanese populations, as well as laying the groundwork for a more comprehensive understanding of needs across populations in Lebanon.

Dylan Terry, IMPACT Lebanon Country Coordinator

SUPPORTED BY:



INITIATIVES PANDA REACH LIBYA/TUNISIA

OUR IMPACT: SYSTEM-WIDE CHANGE

Through a rapid assessment about the needs of migrants recently released from detention centres, considered to be a key information gap in the response, the REACH team highlighted the limited assistance available for this highly vulnerable population group. Assessment findings were reportedly used for advocacy with the Humanitarian Country Team regarding a coordinated response for those released from detention centres, as well as advocacy efforts related to national authorities' migration management plans.



OUR WORK

21

RESEARCH PROJECTS
IMPLEMENTED
DURING 2021

OUR PRODUCTS

46

INFORMATION PRODUCTS PUBLISHED

13,185

HOUSEHOLD INTERVIEWS

72

FOCUS GROUP DISCUSSIONS

7,556

KEY INFORMANT INTERVIEWS

OUR STAFF

34

STAFF WORKING IN
OUR PROGRAMS

COUNTRY PERSPECTIVE

The MSNA is the life blood of information-gathering for all sectors - there is no more valuable exercise than this one when it comes to evidence generation - REACH has done a fantastic job given the circumstances in 2020 and 2021.

Humanitarian Partner, Libya

SUPPORTED BY:



INITIATIVES PANDA REACH OCCUPIED PALESTINIAN TERRITORY

OUR IMPACT: SYSTEM-WIDE CHANGE

The REACH team conducted the first-ever Multi-Sector Needs Assessment (MSNA) in oPt, collaborating with the Palestinian Central Bureau of Statistics to implement data collection in both the West Bank and Gaza Strip. MSNA data was one of the primary sources informing the annual Humanitarian Needs Overview (HNO) and contributed to the needs analysis of five of the seven sectors included in the HNO.



OUR WORK

3
RESEARCH PROJECTS IMPLEMENTED DURING 2021

OUR PRODUCTS

3
INFORMATION PRODUCTS PUBLISHED
10,157
HOUSEHOLD INTERVIEWS

15
KEY INFORMANT INTERVIEWS

OUR STAFF

8
STAFF WORKING IN OUR PROGRAMS

COUNTRY PERSPECTIVE

The 2022 Humanitarian Needs Overview is informed by the first-ever MSNA at the household level for the oPt ... This supported the calculation of sectoral and inter-sectoral 'People in Need' and severity figures, as well as the identification of vulnerable population groups and geographic areas with the most acute needs.

2022 Humanitarian needs overview

SUPPORTED BY:



INITIATIVES PANDA AGORA REACH SYRIA

OUR IMPACT: SYSTEM-WIDE CHANGE

Analysis provided in the REACH Syria Water Crisis Briefing Note from June 2021 not only provided the first comprehensive overview of the impact of the water crisis in Northeast Syria, but also directly informed a NES Forum Inter-Sector Working Group, Water Crisis Response Plan (September 2021), including a funding appeal for 333 million US Dollars.



OUR WORK

26
RESEARCH PROJECTS IMPLEMENTED DURING 2021

OUR PRODUCTS

469
INFORMATION PRODUCTS PUBLISHED
3,173
HOUSEHOLD INTERVIEWS

57
FOCUS GROUP DISCUSSIONS

119,182
KEY INFORMANT INTERVIEWS

OUR STAFF

83
STAFF WORKING IN OUR PROGRAMS

COUNTRY PERSPECTIVE

Thanks as always for this presentation of the key needs in [Northwest Syria]. It's always very important to know changes and priority needs as it guides our advocacy for funding and general advocacy efforts. It's especially important to keep on top of situation while working on advocacy to maintain cross-border access – to be able to highlight that there are considerable humanitarian needs and making sure all modalities remain available.

Protection Analysis Working Group Coordinator, Northwest Syria

SUPPORTED BY:





YEMEN

INITIATIVES REACH

OUR IMPACT: INFORMING CASH-BASED RESPONSE

In April and May 2021, the REACH Yemen team partnered with the CaLP Network and the Yemen Cash and Markets Working Group to launch a comprehensive, innovative assessment of financial service providers (FSPs) across the country. Working in a uniquely challenging context, REACH and its partners collected data from conflict-affected communities, humanitarian organisations, and FSPs themselves to better understand new developments in the scope and potential of Yemen's financial service infrastructure.

OUR WORK

20

RESEARCH PROJECTS
IMPLEMENTED
DURING 2021

OUR PRODUCTS

78

INFORMATION PRODUCTS PUBLISHED

OUR STAFF

11

STAFF WORKING IN
OUR PROGRAMS

COUNTRY PERSPECTIVE

A recent mapping exercise conducted in Yemen captured much richer information than usual for this type of study. The wealth of knowledge gained and the relationships built between Cash and Voucher Assistance (CVA) actors and Financial Service Providers is set to provide real and tangible benefits to the way CVA is delivered in Yemen in the future ... The study has shed light on the untapped opportunities of closer collaboration and work with FSPs more broadly.
Nissa Berntsen (REACH), Crys Chamaa CaLP

SUPPORTED BY:





CENTRAL & WEST AFRICA

+81 RESEARCH CYCLES

8 COUNTRIES

+48 PROJECTS

+117,023 DATA COLLECTION ACTIVITIES

+405 INFORMATION PRODUCTS

INITIATIVES REACH BURKINA FASO

OUR IMPACT: SYSTEM-WIDE CHANGE

Through conducting the second annual Multi-Sector Needs Assessment (MSNA), the REACH team informed crisis-wide decision-making processes, especially by improving a common understanding of the crisis and providing a reliable comparison of the magnitude and severity of humanitarian needs between the assessed population groups.



OUR WORK

8
RESEARCH CYCLES IMPLEMENTED DURING 2021

OUR PRODUCTS

57
INFORMATION PRODUCTS PUBLISHED
5,500
HOUSEHOLD INTERVIEWS

25
FOCUS GROUP DISCUSSIONS
9,500
KEY INFORMANT INTERVIEWS

OUR STAFF

16
STAFF WORKING IN OUR PROGRAMS

COUNTRY PERSPECTIVE

I'd like to express our appreciation for the countrywide MSNA in Burkina Faso and REACH's data and analysis in the tri-border Liptako Gourma region - both are very helpful and informative to our planning.

USAID Bureau for Humanitarian Assistance (BHA), Burkina Faso

SUPPORTED BY:



CAMEROON INITIATIVES PANDA



OUR IMPACT: EVIDENCE-BASED PROGRAMMING

Through PANDA, the IMPACT team conducted a regional territorial profiling, conflict analysis, and perception survey, including first-time data collection in the north and far north regions of Cameroon. This baseline study was designed to directly inform UNDP's five-year Regional Strategy for the Stabilization, Recovery & Resilience of the Boko Haram-affected Areas of the Lake Chad Basin.

OUR WORK

1
RESEARCH PROJECT IMPLEMENTED DURING 2021

OUR PRODUCTS

602
HOUSEHOLD INTERVIEWS
24
FOCUS GROUP DISCUSSIONS

48
KEY INFORMANT INTERVIEWS

OUR STAFF

24
STAFF WORKING IN OUR PROGRAMS

COUNTRY PERSPECTIVE

We gave the people an opportunity to make their voices heard regarding the effects of conflict on their lives and their perception of the inclusiveness and responsiveness of decision-making by local and state authorities, as well as recovery from environmental shocks and the effectiveness of certain basic services, such as education, health, and vocational training provided to them.

Aysha Valery, IMPACT Cameroon Country Focal Point

SUPPORTED BY:



INITIATIVES PANDA AGORA REACH CENTRAL AFRICAN REPUBLIC

OUR IMPACT: PROMOTING LOCAL RESPONSE PLANNING

Through its AGORA initiative, IMPACT deployed teams to five prefectures in the southeast region of CAR, to support local authorities across 21 towns to develop local recovery plans based on a multi-sectoral analysis of needs and participatory planning in each locality.



OUR WORK

13

RESEARCH PROJECTS
IMPLEMENTED
DURING 2021

OUR PRODUCTS

148

INFORMATION PRODUCTS PUBLISHED

14,386

HOUSEHOLD INTERVIEWS

172

FOCUS GROUP DISCUSSIONS

8,391

KEY INFORMANT INTERVIEWS

OUR STAFF

31

STAFF WORKING IN
OUR PROGRAMS

COUNTRY PERSPECTIVE

AGORA activities are critical in the Central African Republic, where local governance actors suffer from a real lack of investment from the state, and a general lack of resources...[Workshop participants] appreciated this response to their needs, while discussing and exchanging on how to improve them in the future.

Le programme de relèvement socioéconomique dans la zone du Sud-Est de la République centrafricaine (RELSUDE) Consortium Coordinator

SUPPORTED BY:



CHAD INITIATIVES REACH PANDA



OUR IMPACT: ENABLING RAPID RESPONSE

Providing the Rapid Response Mechanism (RRM) with information management support is key for ensuring effective coordination between partners who need to understand where operations are ongoing, and priority locations where aid interventions are needed.

OUR WORK

1

RESEARCH PROJECTS
IMPLEMENTED
DURING 2021

OUR PRODUCTS

682

HOUSEHOLD INTERVIEWS

16

FOCUS GROUP DISCUSSIONS

17

KEY INFORMANT INTERVIEWS

OUR STAFF

1

STAFF WORKING IN
OUR PROGRAMS

COUNTRY PERSPECTIVE

IMPACT was able to expand its footprint in Chad through a regional PANDA project focusing on Boko Haram-affected Areas of the Lake Chad Basin region. The baseline study that was produced will inform UNDP's five-year Regional Strategy for Stabilization, Recovery, and Resilience.

SUPPORTED BY:



DEMOCRATIC REPUBLIC OF CONGO

INITIATIVES REACH PANDA



OUR IMPACT: ENABLING RAPID RESPONSE

Following the eruption of the Nyiragongo volcano on 22 May 2021 which destroyed part of the city of Goma in North Kivu province, the REACH team quickly mobilized to provide the humanitarian community in DRC with timely situation analysis of urgent humanitarian needs, damage to infrastructure, and access to markets and basic services.

OUR WORK

12

RESEARCH PROJECTS IMPLEMENTED DURING 2021

OUR PRODUCTS

84

INFORMATION PRODUCTS PUBLISHED

5,074

HOUSEHOLD INTERVIEWS

33

FOCUS GROUP DISCUSSIONS

21,541

KEY INFORMANT INTERVIEWS

OUR STAFF

32

STAFF WORKING IN OUR PROGRAMS

COUNTRY PERSPECTIVE

Monitoring the evolution of the prices of food and non-food products included in the Minimum Expenditure Basket, allowing its contextualization, has been made possible thanks to the consolidation of the Joint Market Monitoring Initiative into a permanent product since June 2021.

2022 Humanitarian Response Plan

SUPPORTED BY:



MALI

INITIATIVES REACH



OUR IMPACT: SYSTEM-WIDE CHANGE

Through the launch of the first-ever Multi-Sector Needs Assessment (MSNA) in Mali, the REACH team contributed towards strengthening coordinated data collection and analysis efforts within the response, as well as raising awareness about the importance of accurate data and analysis for a more needs-based approach to response planning and prioritisation.

OUR WORK

5

RESEARCH PROJECTS IMPLEMENTED DURING 2021

OUR PRODUCTS

10

INFORMATION PRODUCTS PUBLISHED

7,387

HOUSEHOLD INTERVIEWS

24

FOCUS GROUP DISCUSSIONS

5,069

KEY INFORMANT INTERVIEWS

OUR STAFF

10

STAFF WORKING IN OUR PROGRAMS

COUNTRY PERSPECTIVE

Conducting a MSNA for the first time in Mali in 2021 has made it possible to bring to light needs that were not identified during the previous programming cycle.

2022 Humanitarian Needs Overview

SUPPORTED BY:



INITIATIVES AGORA PANDA REACH **NIGER**

OUR IMPACT: SYSTEM-WIDE CHANGE

Through conducting a Multi-Sector Needs Assessment (MSNA), the REACH team informed crisis-wide decision-making processes and directly fed key inter-sectoral findings into the annual Humanitarian Needs Overview.



OUR WORK

10

RESEARCH PROJECTS IMPLEMENTED DURING 2021

OUR PRODUCTS

26

INFORMATION PRODUCTS PUBLISHED

15,664

HOUSEHOLD INTERVIEWS

212

FOCUS GROUP DISCUSSIONS

6,884

KEY INFORMANT INTERVIEWS

OUR STAFF

17

STAFF WORKING IN OUR PROGRAMS

COUNTRY PERSPECTIVE

With the implementation of the AGORA approach, through the SHIMODU project in Niger, IMPACT has been able to go beyond its usual range of activities in the humanitarian sector. By informing locally owned settlements recovery plans and providing technical assistance to local institutional actors in the Diffa region, IMPACT successfully implemented an action-research approach in a complex humanitarian context

Guillaume Pocard, IMPACT Niger Country Coordinator

SUPPORTED BY:



NIGERIA INITIATIVES REACH PANDA AGORA



OUR IMPACT: ENABLING RAPID RESPONSE

Through its "area of knowledge" approach to conducting Humanitarian Situation Monitoring (HSM), the REACH team was able to collect critical multi-sectoral data in certain insecure and hard-to-reach areas in northeast Nigeria. This kind of information supported humanitarian actors in identifying hotspot areas with urgent needs, as well as in advocacy efforts to increase humanitarian access.

OUR WORK

32

RESEARCH PROJECTS IMPLEMENTED DURING 2021

OUR PRODUCTS

80

INFORMATION PRODUCTS PUBLISHED

10,138

HOUSEHOLD INTERVIEWS

98

FOCUS GROUP DISCUSSIONS

5,539

KEY INFORMANT INTERVIEWS

OUR STAFF

74

STAFF WORKING IN OUR PROGRAMS

COUNTRY PERSPECTIVE

REACH was also noted for having spearheaded efforts towards understanding needs and vulnerability in inaccessible areas through engaging and interviewing newly arrived IDPs, as well as IDPs able to communicate with families living under the rule of non-state armed groups.

Barbelet et al, Humanitarian Policy Group (HPG) Working Paper 'Inclusion and exclusion in the north-east Nigeria crisis', November 2021

SUPPORTED BY:





Assessment of hard to
REACH areas



| EAST AFRICA

+54 RESEARCH CYCLES

6 COUNTRIES

+43 PROJECTS

+134,180 DATA COLLECTION ACTIVITIES

+427 INFORMATION PRODUCTS

INITIATIVES REACH ETHIOPIA

OUR IMPACT: INFORMING CASH-BASED RESPONSE

Through the monthly Joint Market Monitoring Initiative (JMMI) conducted in partnership with the Ethiopia Collaborative Cash Delivery Network, the REACH team supported operational partners in the provision of evidence-based cash and voucher assistance. The JMMI also supported discussions about changing market dynamics, an integral part of cash feasibility considerations.



OUR WORK

5
RESEARCH PROJECTS IMPLEMENTED DURING 2021

OUR PRODUCTS

1
INFORMATION PRODUCTS PUBLISHED
980
HOUSEHOLD INTERVIEWS

600
KEY INFORMANT INTERVIEWS

OUR STAFF

21
STAFF WORKING IN OUR PROGRAMS

COUNTRY PERSPECTIVE

The timely assessment of the monthly Joint Market Monitoring Initiative and the monthly price monitoring has been an essential service not only for our cooperation but also for our dialogue with Government and with private sector partners.

European Union Delegation, Ethiopia

SUPPORTED BY:



INITIATIVES PANDA REACH KENYA

OUR IMPACT: INFORMING CASH-BASED RESPONSE

Through conducting post distribution monitoring and information management support to several cash consortium bodies in Kenya, the REACH team informed the effective delivery of cash-based humanitarian assistance as well as the design of further cash-based programming.



OUR WORK

8
RESEARCH PROJECTS IMPLEMENTED DURING 2021

OUR PRODUCTS

39
INFORMATION PRODUCTS PUBLISHED
7,600
HOUSEHOLD INTERVIEWS

24
FOCUS GROUP DISCUSSIONS
3,684
KEY INFORMANT INTERVIEWS

OUR STAFF

10
STAFF WORKING IN OUR PROGRAMS

COUNTRY PERSPECTIVE

Your findings in the multi-sector needs assessments (MSNA) are vital in our protection programming, and this year, we shall drop our regular yearly participatory assessment and allow REACH MSNA data to feed into our programming, as the data is multi-sectoral and very informative, we shall only conduct focus group discussions.

Community-based protection officer, UNHCR Dadaab

SUPPORTED BY:





SOMALIA INITIATIVES REACH PANDA

OUR IMPACT: SYSTEM-WIDE CHANGE

Considering the ongoing protracted crisis in Somalia and resulting resource constraints, the REACH team conducted its fifth annual Multi-Sector Needs Assessment (MSNA) in 2021, in a continued effort to inform crisis-wide decision-making processes and support prioritization of population groups with the most significant humanitarian needs.

OUR WORK

9
RESEARCH PROJECTS
IMPLEMENTED
DURING 2021

OUR PRODUCTS

142
INFORMATION PRODUCTS PUBLISHED
22,804
HOUSEHOLD INTERVIEWS

27
FOCUS GROUP DISCUSSIONS
7,238
KEY INFORMANT INTERVIEWS

OUR STAFF

22
STAFF WORKING IN
OUR PROGRAMS

COUNTRY PERSPECTIVE

In terms of data collection and analysis, in 2022 ... REACH will continue to support the clusters and humanitarian partners in Somalia to understand the severity of needs of the assessed population, including living standard gaps, in cluster-specific, and inter-sectoral approaches.
Somalia 2022 Humanitarian Response Plan

SUPPORTED BY:



INITIATIVES SOUTH SUDAN REACH

OUR IMPACT: ENABLING RAPID RESPONSE

REACH was able to feed evidence produced through a variety of data sources, including Rapid Needs Assessments (RNAs), to inform immediate scale-up of assistance and resources in critical areas of concern. For example, the Tambura RNA was reportedly used as a foundation for the ICCG/ HCT discussions on improved response in the area. Similarly, the Cuibet RNA resulted in a call for an ICCG visit and need for additional assessment, based on reported instances of hunger-related deaths.



OUR WORK

18
RESEARCH PROJECTS
IMPLEMENTED
DURING 2021

OUR PRODUCTS

227
INFORMATION PRODUCTS PUBLISHED
13,177
HOUSEHOLD INTERVIEWS

478
FOCUS GROUP DISCUSSIONS
65,268
KEY INFORMANT INTERVIEWS

OUR STAFF

134
STAFF WORKING IN
OUR PROGRAMS

COUNTRY PERSPECTIVE

REACH'S work is formidable and key in program design and implementation. Timely assessments would be of great need for timely decision making and improvement of programs and hoping REACH ensures this in 2022 henceforth.
Humanitarian Partner, South Sudan

SUPPORTED BY:





SUDAN INITIATIVES REACH

OUR IMPACT: INFORMING OPERATIONAL ACTORS

With few operational partners in El Geneina, West Darfur and very little information management, assessment, and analysis capacity, REACH (hosted by NRC) was able to support the Site Management Working Group through the training of NRC and partner field teams, develop and adapt assessment tools, and launch data collection through site key informant interviews. The information products and maps helped inform operational partners and raise awareness about the evolving situation and needs of the displaced.

OUR WORK

12

RESEARCH PROJECTS IMPLEMENTED DURING 2021

OUR PRODUCTS

1

INFORMATION PRODUCTS PUBLISHED

5,599

HOUSEHOLD INTERVIEWS

295

KEY INFORMANT INTERVIEWS

OUR STAFF

2

STAFF WORKING IN OUR PROGRAMS

COUNTRY PERSPECTIVE

According to our partner NRC, the situation in Darfur was severe. Over half a million people in Sudan - mostly in Darfur - were displaced in 2021 alone. For this reason, IMPACT felt it was important to have an operational presence and support the response in displacement sites.

Alexandra Goldsack, Head of Programmes for East Africa

SUPPORTED BY:



INITIATIVES PANDA REACH UGANDA

OUR IMPACT: INFORMING CASH-BASED RESPONSE

The IMPACT team informed the response to the resurgence of COVID-19 in Uganda through two rapid assessments that shed light on the increased needs and vulnerabilities of refugees, as well as the impact of COVID-19 on the Karamoja region, which was already affected by food insecurity and malnutrition prior to the pandemic.



OUR WORK

14

RESEARCH PROJECTS IMPLEMENTED DURING 2021

OUR PRODUCTS

17

INFORMATION PRODUCTS PUBLISHED

5,904

HOUSEHOLD INTERVIEWS

101

FOCUS GROUP DISCUSSIONS

401

KEY INFORMANT INTERVIEWS

OUR STAFF

18

STAFF WORKING IN OUR PROGRAMS

COUNTRY PERSPECTIVE

Our 'Financial Services in the Uganda Refugee Response - An Assessment of User Perspective' report offered Uganda response actors an overview of beneficiaries' experiences with cash assistance with respect to different delivery modalities such as mobile money, bank accounts, and vouchers. Thanks to this assessment, response actors can identify the most appropriate delivery modality, taking into account beneficiary preferences

Giulia Montisci, IMPACT Uganda Country Coordinator

SUPPORTED BY:



EUROPE

+20 RESEARCH CYCLES

2 COUNTRIES

+26 PROJECTS

+52,709 DATA COLLECTION ACTIVITIES

+142 INFORMATION PRODUCTS



ARMENIA & AZERBAIJAN

INITIATIVES REACH PANDA



OUR IMPACT: SYSTEM-WIDE CHANGE

The IMPACT information management deployment helped to strengthen coordination in the Armenia response and its rapid multi-sector needs assessment provided a foundation for the inter-agency response plan. Donors went on to fund further needs assessments and contribute funding to meet immediate needs in the response plan and appeal.

OUR WORK

2

RESEARCH PROJECTS IMPLEMENTED DURING 2021

OUR PRODUCTS

22

INFORMATION PRODUCTS PUBLISHED

2,470

HOUSEHOLD INTERVIEWS

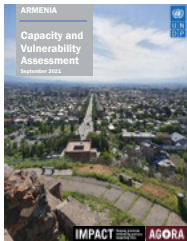
318

KEY INFORMANT INTERVIEWS

OUR STAFF

3

STAFF WORKING IN OUR PROGRAMS



KEY PUBLICATION

Under its AGORA initiative, IMPACT partnered with the UN Development Programme to conduct a Capacity and Vulnerability Assessment (CVA). The CVA aimed to inform cross-sectoral programming led by UNDP, as well as inform local recovery and development plans in Armenia.

SUPPORTED BY:



UKRAINE

INITIATIVES REACH PANDA AGORA



OUR IMPACT: SYSTEM-WIDE CHANGE

By the end of 2021, the majority of IMPACT's funding was geared towards informing nexus or development programming – for example, socioeconomic analysis, AGORA activities, and disaster risk recovery. This shift demonstrated our ability to transition from humanitarian-focused research activities to informing development priorities as the crisis evolved.

OUR WORK

18

RESEARCH PROJECTS IMPLEMENTED DURING 2021

OUR PRODUCTS

120

INFORMATION PRODUCTS PUBLISHED

34,285

HOUSEHOLD INTERVIEWS

174

FOCUS GROUP DISCUSSIONS

15,462

KEY INFORMANT INTERVIEWS

OUR STAFF

38

STAFF WORKING IN OUR PROGRAMS

COUNTRY PERSPECTIVE

The largest humanitarian donor in Ukraine considered REACH to be their primary trusted source of data on remaining humanitarian needs in the country.

Priscilla Yoon, IMPACT Ukraine Country Coordinator

SUPPORTED BY:



CENTRAL & SOUTH ASIA

+26 RESEARCH CYCLES

2 COUNTRIES

+15 PROJECTS

+34,610 DATA COLLECTION ACTIVITIES

+155 INFORMATION PRODUCTS

INITIATIVES AGORA REACH AFGHANISTAN

OUR IMPACT: SYSTEM-WIDE CHANGE

Findings from the REACH Afghanistan hard-to-reach assessment contributed towards data-driven prioritisation of geographical areas, especially for the Education in Emergencies (EiE) Cluster.



OUR WORK

22

RESEARCH PROJECTS IMPLEMENTED DURING 2021

OUR PRODUCTS

99

INFORMATION PRODUCTS PUBLISHED

15,000

HOUSEHOLD INTERVIEWS

200

FOCUS GROUP DISCUSSIONS

13,000

KEY INFORMANT INTERVIEWS

OUR STAFF

55

STAFF WORKING IN OUR PROGRAMS

COUNTRY PERSPECTIVE

According to the 2022 Afghanistan Humanitarian Response Plan, the REACH team's Whole of Afghanistan Multi-Sector Needs Assessment and Hard-to-Reach Areas assessments are considered to be "vital" and the basis for "collective needs analysis and response planning each year."

SUPPORTED BY:



INITIATIVES PANDA REACH BANGLADESH

OUR IMPACT: SYSTEM-WIDE CHANGE

Findings from the Joint Multi-Sector Needs Assessment (J-MSNA) were cited in the Bangladesh Joint Response Plan to highlight the severity of needs of Rohingya refugees and adjacent host communities. The findings were particularly used to advocate for mainstreaming accountability of humanitarian actors to crisis-affected people and making it a core commitment of the response strategy.



OUR WORK

4

RESEARCH PROJECTS IMPLEMENTED DURING 2021

OUR PRODUCTS

56

INFORMATION PRODUCTS PUBLISHED

6,212

HOUSEHOLD INTERVIEWS

71

FOCUS GROUP DISCUSSIONS

127

KEY INFORMANT INTERVIEWS

OUR STAFF

22

STAFF WORKING IN OUR PROGRAMS

COUNTRY PERSPECTIVE

After more than a year of reduced service provision in both camps and the host community due to the COVID-19 pandemic, the MSNA was a unique opportunity to understand ongoing gaps, as well as trends in household needs across sectors.

Cara Kielwein, IMPACT Senior Assessment Officer

SUPPORTED BY:



LATIN AMERICA AND CARIBBEAN

+19 RESEARCH
CYCLES

3 COUNTRIES

+14 PROJECTS

+36,213 DATA COLLECTION
ACTIVITIES

+146 INFORMATION
PRODUCTS



COLOMBIA

INITIATIVES REACH



OUR IMPACT: INFORMING CASH-BASED RESPONSE

The Rapid Market Assessment in Arauqita supported advocacy efforts with government authorities in Colombia, especially through providing the evidence base to demonstrate that a cash-based response was viable in the country. The assessment also revealed key physical barriers for market access, which humanitarian partners could integrate into their programming and address through cash transfers.

OUR WORK

8

RESEARCH PROJECTS IMPLEMENTED DURING 2021

OUR PRODUCTS

89

INFORMATION PRODUCTS PUBLISHED

32,659

HOUSEHOLD INTERVIEWS

32

FOCUS GROUP DISCUSSIONS

56

KEY INFORMANT INTERVIEWS

OUR STAFF

15

STAFF WORKING IN OUR PROGRAMS

COUNTRY PERSPECTIVE

The MSNA, implemented for the first time in Colombia, is a valuable tool for the clusters to better assess the key humanitarian needs in the country.

Paraphrased from OCHA remarks during the HNO workshop

SUPPORTED BY:



INITIATIVES PANDA REACH

HAITI

OUR IMPACT: INFORMING CASH-BASED RESPONSE

Through launching the Joint Market Monitoring Initiative, the team in Haiti contributed towards both strengthening coordinated data collection and analysis efforts within the response as well as raising awareness about the importance of accurate data and analysis for more needs-based approach to response planning and prioritisation.



OUR WORK

9

RESEARCH PROJECTS IMPLEMENTED DURING 2021

OUR PRODUCTS

57

INFORMATION PRODUCTS PUBLISHED

3,150

HOUSEHOLD INTERVIEWS

16

FOCUS GROUP DISCUSSIONS

300

KEY INFORMANT INTERVIEWS

OUR STAFF

9

STAFF WORKING IN OUR PROGRAMS

COUNTRY PERSPECTIVE

The increase in food prices and the comparison between the different departments allow a better understanding of the most vulnerable areas to be targeted by our activities

Humanitarian Partner, Haiti

SUPPORTED BY:



INITIATIVES REACH

VENEZUELA

OUR IMPACT: INFORMING CASH-BASED RESPONSE:

The REACH team, in collaboration with the Venezuela Cash Working Group, adapted the first Market Expenditure Basket (MEB) in the country using the Joint Market Monitoring Initiative framework, and continued to monitor MEB prices over the course of the year.



OUR WORK

2

RESEARCH PROJECTS
IMPLEMENTED
DURING 2021

OUR STAFF

4

STAFF WORKING IN
OUR PROGRAMS

COUNTRY PERSPECTIVE

The REACH HSM is an impartial source of information in this highly polarized context where data collection is a challenge.

Paraphrased from a meeting with humanitarian donors

SUPPORTED BY:





PARTNERSHIP FRAMEWORK

IMPACT promotes a collaborative approach and supports established inter-agency coordination mechanisms at global and country levels. In 2021, IMPACT continued to strengthen its role in the global humanitarian system, notably through its participation in several bodies of the Inter-Agency Standing Committee as well as through its active engagement in global clusters and in Grand Bargain workstreams.

OUR SISTER ORGANISATION



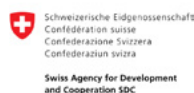
ACTED is IMPACT's sister organisation. ACTED hosts and facilitates IMPACT's field operations and leads AGORA project implementation.

MEMBER OF JOINT INITIATIVES



The United Nations Institute for Training and Research (UNITAR)'s Operational Satellite Applications Programme (UNOSAT) provides REACH with remote sensing expertise and technical support.

DONOR AGENCIES



GLOBAL CLUSTERS



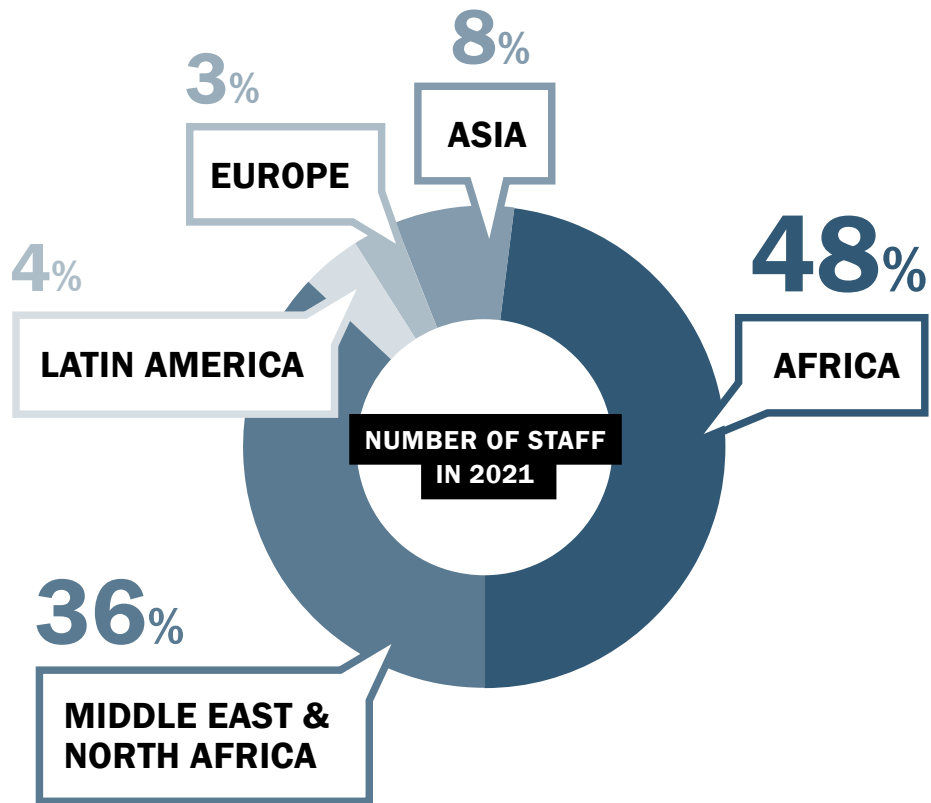
UN AGENCIES



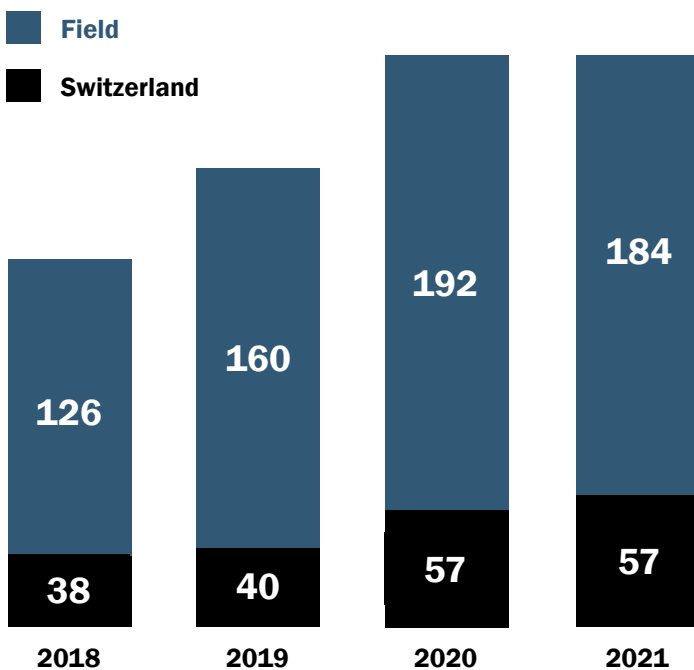
OTHER PARTNERS



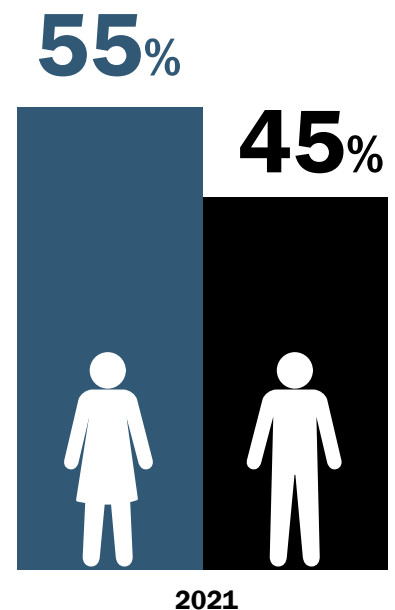
HUMAN RESOURCES



NUMBER OF STAFF

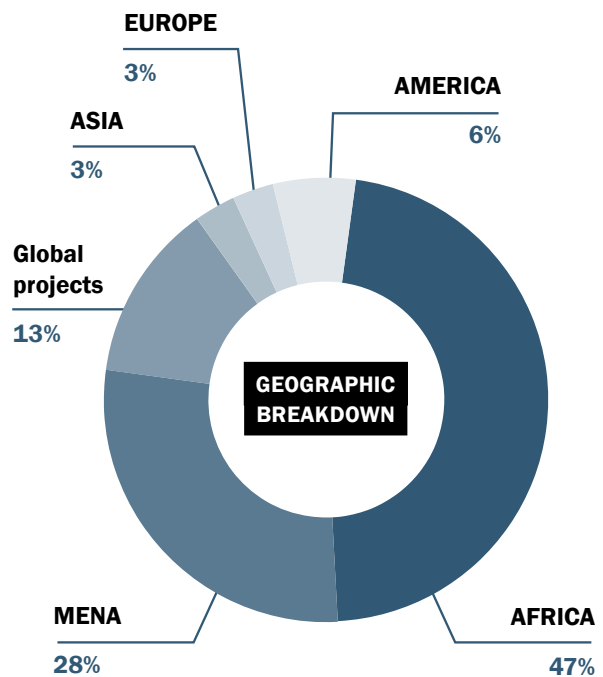
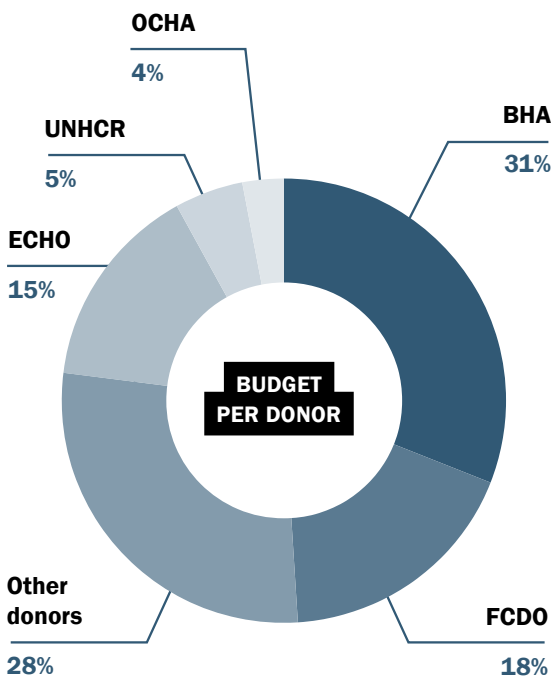
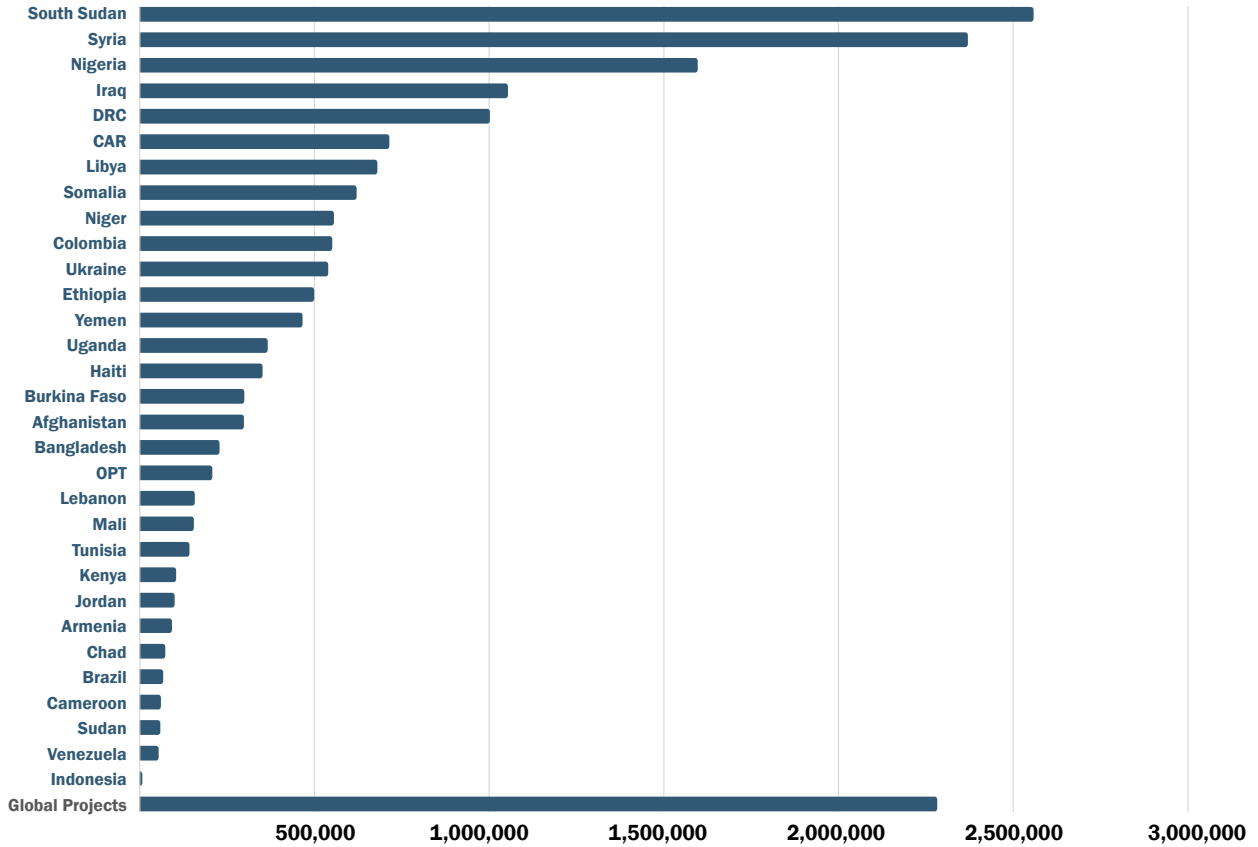


IMPACT STAFF PER GENDER



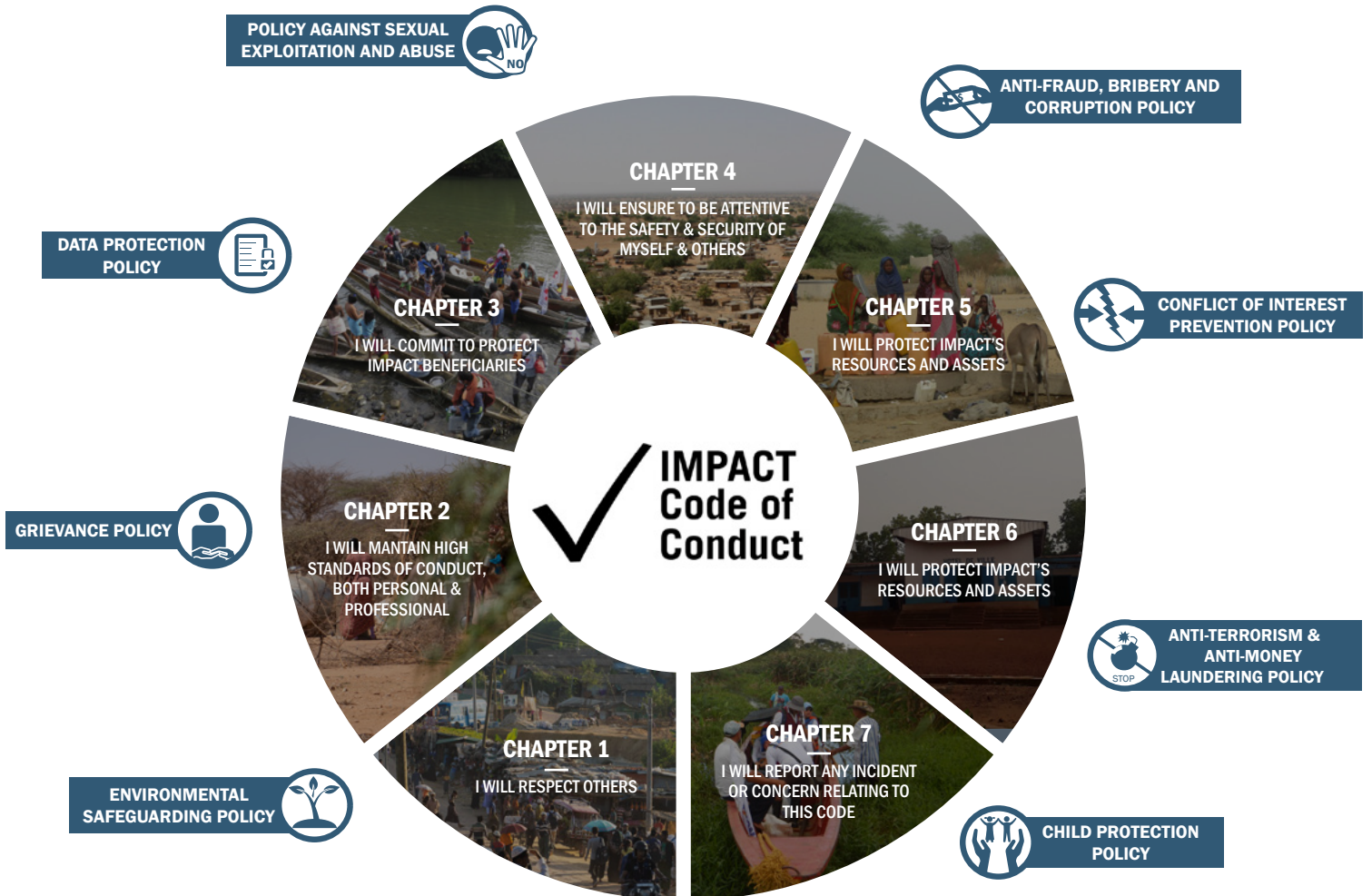
FINANCE

In 2021, IMPACT annual budget amounted to **21,423,592CHF**



* Projects implemented from HQ with potentially short term deployment in different countries

CODE OF CONDUCT AND POLICIES



ANTI-FRAUD, BRIBERY AND CORRUPTION POLICY

IMPACT has a no tolerance approach towards corruption and is committed to respecting the highest standards in terms of efficiency, responsibility and transparency in its activities.

CONFLICT OF INTEREST PREVENTION POLICY

To ensure the most efficient, responsible and transparent delivery of aid, IMPACT, its staff and partners commit to preventing their private interests conflicting with their duties.

ANTI-TERRORISM AND ANTI-MONEY LAUNDERING POLICY

IMPACT is committed to never knowingly support, tolerate or encourage terrorism, the activities of those who embrace terrorism and anti-money laundering activities.

CHILD PROTECTION POLICY

IMPACT commits to safeguarding children from harm within internal procedure, throughout all activities and particularly in the implementation of child protection mainstreaming within research.

POLICY AGAINST SEXUAL EXPLOITATION AND ABUSE

IMPACT adopts a zero tolerance approach towards sexual exploitation and abuse, and is thus committed to their prevention both within the organisation and within the framework of its programmes and beneficiary populations.

GRIEVANCE POLICY

IMPACT's Grievance Policy provides a framework for professional grievances raised by staff through internal dedicated channels of reporting, and a proper response mechanism and follow-up.

DATA PROTECTION POLICY

IMPACT's Data Protection Policy controls how personal information can be used and shared, as well as ensure the protection and confidentiality of personal and sensitive data.

ENVIRONMENTAL SAFEGUARDING POLICY

IMPACT is committed to the promotion of a 3Zero world: zero exclusion, zero carbon, zero poverty. In line with this, IMPACT is committed to good environmental stewardship in its operations and in all of its humanitarian and development programming. IMPACT commits to minimising the environmental impact of our operations.

GOVERNANCE

The association of IMPACT Initiatives is governed by a General Assembly composed of six members, of whom five make up the Committee.

THE GENERAL ASSEMBLY is composed of six members and meets at least yearly as an Ordinary General Assembly. Extraordinary General Assemblies can be called by the Committee. The General Assembly approves the yearly Report and Accounts as well as the provisional budget of the Association. In addition to this, it decides any modifications to the statutes.

THE COMMITTEE is composed of administrators who are elected by the General Assembly for a period of three years. It includes five administrators, of whom one or two are renewed during the annual ordinary General Assembly. The Committee elects a President, a Secretary and Treasurer when necessary.



UNDER THE SPOTLIGHT

In 2021, IMPACT strengthened its external engagement with a range of global actors, including UN agencies, NGO partners, academic institutions, and media organisations. A few examples are highlighted below:

GLOBAL EVENTS

Head of Research Nayana Das participated on the panel, "Leaving no one behind: the need to measure equity," at the 3rd annual **UN World Data Forum** in Bern, Switzerland.



MEDIA REFERENCES

A November 2021 article from The Guardian about the impact of the climate crisis on flooding and food security in South Sudan cited a REACH Shocks Verification Assessment to Fangak County, one of the worst-affected areas.



NEW PARTNERSHIPS

IMPACT participated in a variety of events at OCHA's annual **Humanitarian Networks & Partnerships Week (HNPW)**, including facilitation of a session on "Improving aid localization through settlement-based interventions," together with Shelter Cluster experts from CRS and NRC.

In October 2021, REACH and the World Food Programme (WFP) signed a first-ever two-year regional Memorandum of Understanding (MoU), committing to combine resources and expertise to better serve the needs of the most vulnerable populations across West Africa.

COLLABORATIONS WITH ACADEMIA

REACH Global Food Security Assessment Specialist, Matthew Day, contributed as a co-author to "Seeing in the Dark: Real-Time Monitoring in Humanitarian Crises," a **joint report published by the Feinstein International Center at Tufts University**.

The report included REACH Humanitarian Situation Monitoring and the REACH-led Integrated Needs Tracking System in South Sudan as case study examples.



REACH and WFP are known for the quality of their food security assessments as stand-alone agencies. Together, we will only be stronger, in strengthening national food security and market information systems in the region.

-
Elvira Pruscini, WFP Deputy Regional director

Cover photo: Afghanistan, OCHA Linda Tom

Page 2: South Sudan, IMPACT
Page 4: Iraq, UNHCR
Jordan, IMPACT Initiatives
Page 5: Jordan, IMPACT Initiatives
Niger, IMPACT Initiatives
Page 6: CAR, IMPACT Initiatives
Iraq, UNHCR
Page 7: Jordan, OCHA
Chad, IMPACT Initiatives
Nigeria, IMPACT Initiatives
Page 10-11: Somalia, IMPACT Initiatives
Page 14: Ukraine, IMPACT Initiatives
Page 15: Armenia, IMPACT Initiatives
Ukraine, IMPACT Initiatives
Page 17: Libya, UNHCR
Iraq, IMPACT Initiatives
Jordan, IMPACT Initiatives
Page 18: Libya, IMPACT Initiatives
Lebanon, Etienne Boulanger
Page 19: OPT, IMPACT Initiatives
Syria, IMPACT Initiatives
Page 20: Yemen, IMPACT Initiatives
Page 21: Niger, IMPACT Initiatives
Page 22: Burkina Faso, IMPACT Initiatives
Cameroon, IMPACT Initiatives
Page 23: Mali, IMPACT Initiatives
Chad, IMPACT Initiatives
Page 24: DRC, IMPACT Initiatives
CAR, IMPACT Initiatives
Page 25: Niger, IMPACT Initiatives
Nigeria, IMPACT Initiatives
Page 26: South Sudan, IMPACT Initiatives
Page 27: Ethiopia, IMPACT Initiatives
Kenya, IMPACT Initiatives
Page 28: Somalia, IMPACT Initiatives
South Sudan, IMPACT Initiatives
Page 29: Sudan, IMPACT Initiatives
Uganda, IMPACT Initiatives
Page 30: Bangladesh, ISCG
Page 31: Afghanistan, OCHA
Bangladesh, ISCG
Page 32: Haiti, IMPACT Initiatives
Page 33: Haiti, SIPA US
Colombia, OCHA
Page 34: Venezuela, IMPACT Initiatives
Page 35: Somalia, OCHA
Page 40: Somalia, IMPACT Initiatives
CAR, IMPACT Initiatives
Colombia, OCHA
Bangladesh, ISCG
Sudan, IMPACT Initiatives
Venezuela, OCHA
Page 42: Switzerland, IISD Kiara Worth

Backcover photo: Afghanistan, IMPACT Initiatives



www.impact-initiatives.org
www.reach-initiative.org
www.reachresourcecentre.org



@IMPACT_init
@REACH_info



@IMPACT Initiatives



9 chemin de Balexert
1219 Geneva
Switzerland



+41 22 566 29 63



geneva@impact-initiatives.org

Shaping practices
Influencing policies
Impacting lives

IMPACT